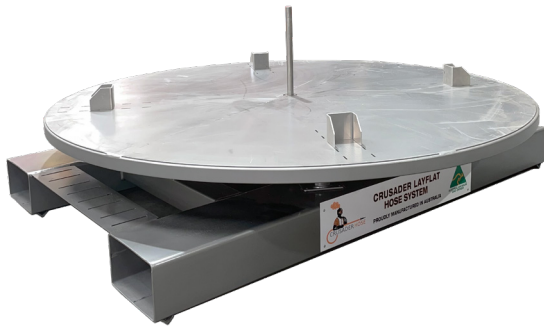


Turntable

Layflat hose handling solution



IDEAL FOR

- Unrolling layflat hose
- Preventing spiralling or corkscrewing when unrolling

FEATURES

- ✓ Two sets of tyne pockets
- ✓ Removable pallet locator brackets
- ✓ Removable shaft
- ✓ Manual operation

The **Turntable** from Crusader Hose is primarily designed to assist with unrolling flatpacks of layflat hose.

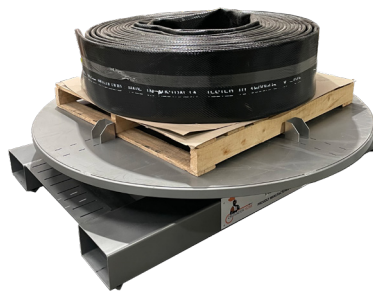
They are also ideal for reloading our large hose reels when using our Hamerley RDU for rapid in-pit dewatering.

The **Turntable** has a removable shaft and pallet locator brackets, which are easily stored on the unit when not in use. The locator brackets accommodate different sized pallets (max. pallet size when using locator brackets 1600 mm).

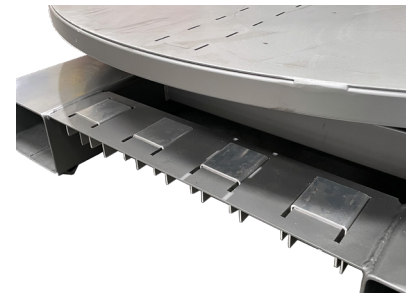
Engineered to suit up to 200 metres of 12" layflat hose without couplings, the Turntable is constructed out of mild steel and painted in a Hi Build Zinc primer basecoat and Hammerdry topcoat.

The **Turntable** has two working configurations:

1. Loaded up with hose on a pallet (recommended for longer lengths)
2. Loaded up with hose without a pallet (to be used with shorter lengths)



Pallet locator brackets slot into the tabletop to accommodate different sized pallets



Storage slots on the unit for the pallet locator brackets

TECHNICAL DATA

Dimensions	Tabletop Ø 1800 mm Tyne pocket length 1820 mm Height 355 mm (max. height 703 mm)
Rated capacity	1000 kg
Tare weight	254 kg
Part #	ACH001TSA



Scan here to learn more about our layflat hose handling solutions

Crusader Hose Pty Ltd

22 Industry Place, Bayswater VIC 3153 Australia
e: sales@crusaderhose.com.au p: +61 3 9720 1100

www.crusaderhose.com.au
2309

