

Argyle™

Layflat hose handling solution



IDEAL FOR

- Emergency dewatering
- Civil works, industrial & mining operations
- Low workforce requirements
- Safe & easy handling



Skid base with remote drive

The **Argyle** is a popular brand in our Reel Systems Family. This innovative layflat hose reel winder from Crusader Hose has been designed for the rapid deployment and retrieval of layflat hose.

Crusader Hose fabricated the **Argyle** to help alleviate the manual labour challenges associated with handling layflat hose pipelines. This reel system makes handling layflat hose easy, safe and more efficient and is perfect for civil works, industrial and mining operations.

Revolutionary in design, the **Argyle** features interchangeable hose crates that quickly mount to a trailer or skid base and are driven by a hydraulic motor.

The Argyle hose crates are available in two versatile models to suit your project needs:

- Two Reels - individually operable, 2 x 100 m of 8" hose capacity*
- Single Spool - 1 x 250 m of 6" hose capacity*

FEATURES

- ✓ Hose crate with two reels or single spool
- ✓ Heavy-duty frame - hot-dipped galvanised or painted finish
- ✓ Trailer-mounted or skid base
- ✓ Rated lifting & tie-down points
- ✓ Free-spool capability
- ✓ High-torque motor
- ✓ Quick-connect couplers
- ✓ Key start diesel engine
- ✓ Handheld remote control
- ✓ Australian Made

For technical data see overleaf.

Crusader Hose is in regular consultation with industry. The Reel Systems are designed and manufactured with our customers' needs in mind to make the job safe, easy and more efficient.

Proudly manufactured in Australia.



Scan to
watch video

Crusader Hose Pty Ltd

22 Industry Place, Bayswater VIC 3153 Australia

e: sales@crusaderhose.com.au p: +61 3 9720 1100

www.crusaderhose.com.au

2604

Crusader Hose reserves the right to modify any specification as part of ongoing product development and without prior notice. Contact Crusader Hose to ensure that the most up-to-date information is used.



Argyle™ Reel System

TECHNICAL DATA

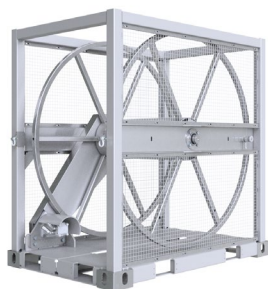


Hose Crate Two Reels



Features	<ul style="list-style-type: none"> ✓ Two reels - individually operable ✓ Each reel suits 1 x 100 m of 8" ID hose* ✓ Fork tyne pockets
Dimensions	1760 mm x 1130 mm x 1800 mm
Max pull (inner layer)	996 kg
Weight (Tare/Gross)	620 kg / 1770 kg
Part #	ACW200ACA
*Capacity dependent on winding tension, type of hose & couplings	

Hose Crate Single Spool



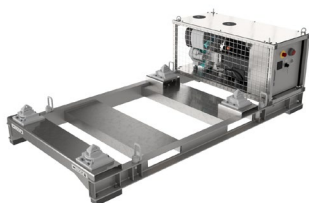
Features	<ul style="list-style-type: none"> ✓ Single spool - suits 1 x 250 m of 6" ID hose* ✓ Fork tyne pockets
Dimensions	1760 mm x 1130 mm x 1800 mm
Max pull (inner layer)	996 kg
Weight (Tare/Gross)	735 kg / 1740 kg
Part #	ACW100ACA
*Capacity dependent on winding tension, type of hose & couplings	

Trailer



Features	<ul style="list-style-type: none"> ✓ Trailer base with power pack ✓ Key start diesel engine ✓ Road registered trailer
-----------------	--

Skid Base



Features	<ul style="list-style-type: none"> ✓ Skid base with power pack ✓ Key start diesel engine
Dimensions	2600 mm x 1350 mm x 800 mm
Weight*	388 kg
*Weight includes the power pack	

Crusader Hose Pty Ltd

22 Industry Place, Bayswater VIC 3153 Australia

e: sales@crusaderhose.com.au p: +61 3 9720 1100

www.crusaderhose.com.au

2604

Crusader Hose reserves the right to modify any specification as part of ongoing product development and without prior notice. Contact Crusader Hose to ensure that the most up-to-date information is used.

